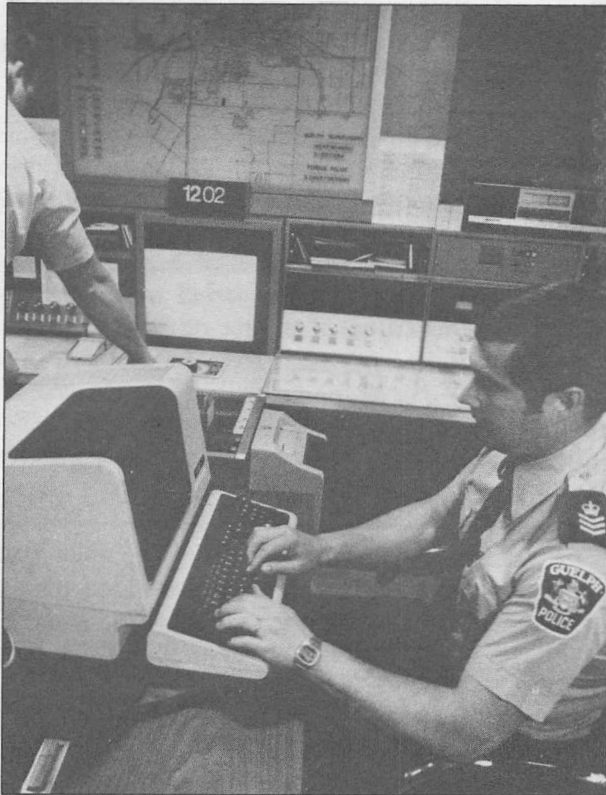




I.P. Sharp

# newsletter



## Police Get a Computerized Crime-Fighter

Four Canadian police forces are linked by computers, using software designed by the Special Systems Division of I. P. Sharp Associates. The Police Regionalized Information and Data Entry (PRIDE) central computer system provides complete information retrieval capabilities for the police forces in the southern Ontario cities of Kitchener-Waterloo, Guelph, Stratford, and Brantford. PRIDE holds their daily operational and management records, providing more efficient information-sharing among the participating forces.

The installation at the Waterloo Regional Police Force consists of a Digital Equipment Corporation VAX 11/780 computer system which supports about 60 remote terminals. However, the computer programs developed for the system run on a range of VAX computers. I. P. Sharp Associates will be moving its own software to a VAX 11/750 and 730 in the near future. The number of terminals linked to PRIDE can vary. At the Guelph police station, there are 11 terminals connected to the system, Brantford has 7, Stratford 6, and Waterloo 35.

Harold Basse, chief of the Waterloo Regional Police Force, says, "This is a significant event in the changing face of policing in one particular area. It certainly is the most modern computer system in Canada, and, perhaps, in North America."

Most police forces across Canada keep paper records. Under the old manual system, the Waterloo Regional Police Communications and Records Division maintained a name index file typed on cards. Updating and filing were relatively effective, but retrieving the cards was a slow process. Using terminals, they now have many ways to access the information.

### in this issue

Police Get a Computerized Crime-Fighter.. 1	
Novo: A World Force in Bioengineering....3	
Newsday Tracks the News with Online Data.....5	
SUPERPLOT Introduces 3-D Prisms..... 6	
Appointments in London, Toronto, and the International Banking Support Group..... 8	
New Local Access Number for Aberdeen.. 9	
Special Offer from APL PRESS..... 9	
Bookends..... 10	

#### Technical Supplement 51

The Rank Operator.....T1	
Contest 13.....T3	
Correction.....T4	

## ... A Computerized Crime-Fighter

"There are questions we couldn't even ask under the old system," adds Staff Sergeant Herb Breese of the Guelph Police Force, "that we can get answers to in seconds now. For instance, with just a first name, a person's height and hair colour, the computer can be searched for names of people meeting the description. With just a colour and make of a car, a search can find the licence number and owner."

### Fast retrieval of information

This same fast search is possible in all four police forces since they share a massive data bank with its own backup system. Staff Sergeant Larry Gravill, Waterloo Regional Police Computer Services, explains, "There are two complete systems in case of hardware failure.

Since the system runs 24 hours a day at all times, we have a total duplication of our information so we can switch over to our back-up system if necessary.

"PRIDE is linked with a national data base in Ottawa, the Canadian Police Information Centre (CPIC), which in turn connects with other international agencies such as INTERPOL and other Canadian forces. For example, we can access Vancouver records from Waterloo."

The transfer of information can take as little as seven seconds. One Communications and Records Division clerk in Waterloo says that at least two crimes she knew of had been solved when a search was carried out with the minimal information of a first name and general description.

Adds Staff Sergeant Gravill, "There's no such thing anymore as a local criminal. The information process is reaching a much wider

### Special Systems Division: Public Safety Group

The Special Systems Division of I. P. Sharp Associates has 20 years of experience in specifying and implementing on-site computer systems in a variety of applications. These include defence, air traffic control, nuclear reactor control, police information, stock exchange and brokerage, microfilm retrieval, data communications, and process management information systems.

The Special Systems Division comprises two groups: the PROMIS group, which develops computerized systems for semiconductor manufacturing facilities, and the more recently formed Public Safety Group, which focuses on the production and licensing of software packages for emergency service organizations.

Among the systems developed by the Public Safety Group, the most significant are:

- Police Automated Registration Information System (PARIS) was originally developed for the Ontario Police Commission. Similar systems were later installed in British Columbia and Alberta, Canada.
- Police Regionalized Information and Data Entry (PRIDE) was developed for the Regional Police Force of Waterloo, and the cities of Brantford, Stratford, and Guelph. (See the preceding article.) Phase 2 of this

system deals with the computer aided dispatch of police officers and vehicles; and Phase 3, the installation of mobile data terminals in police vehicles.

- Computer Aided System for Police Enforcement and Records (CASPER) is currently under development for the Peel Regional Police Force. Similar to PRIDE, CASPER will also incorporate computer aided dispatch and mobile data terminals, with an extensive records-keeping system and a complete Canadian Police Information Centre (CPIC) interface.
- Toronto Fire Department Computer Aided Dispatch system, presently under development, will be used for address verification and personnel/apparatus dispatching.

For more information on these or other applications, contact Mary Lane, Product Manager:

Public Safety Group, Special Systems Division  
I. P. Sharp Associates Limited  
Suite 1900  
2 First Canadian Place  
Toronto, Ontario  
Canada M5X 1E3  
Telephone: 416 364-5361

### ... A Computerized Crime-Fighter

base. We can access information on criminal records from the other three cities and they can access ours.

"We have expanded from four terminals for the entire region in the Waterloo Regional Police Communications and Records Division, so officers can access terminals in their branch and formulate their own queries. Officers are still using radio channels in cruisers and retrieving information from the office when on patrol. But once they are in the divisional office to write reports, have lunch, or do follow-up investigation, they don't have to go through operators in the Communications and Records Division. They have their own terminals, which speeds up the search time. They also have the flexibility to do a number of queries which they might have been hesitant to do when there are only three to four operators in Communications and Records handling up to 100 officers at a time."

Not only does PRIDE aid the officer on the beat, but after all their paperwork is done, the police forces compile statistics by computer and store them on the system.

Now that the records system is in place with rapid exchange of information and retrieval of data, the next step is a computer aided dispatch system. By late August of this year, the final design for the system will be complete. Dispatchers will be able to get immediate information on a call, verify the address, and assign patrol units to service the call.

Staff Sergeants Gravill and Breese agree that a natural extension of computer aided dispatch is mobile terminals in cruisers, which they feel may be installed late 1985 or 1986. It's possible for the programs to be ready much sooner, but funding is far off. There are only a few major cities in North America that have computer terminals in police cars.

With state-of-the-art technology available to them, you can look to these four police forces to continue to be innovative when it comes to crime-fighting. ■

### Novo: A World Force in Bioengineering

Novo Industri A/S of Denmark is the world's top producer of enzymes for industrial use, and a leading world provider of insulin. Ninety-eight per cent of its products are sold outside Europe.

This impressive corporate story began in 1925 when two brothers, Harald and Thorvald Pedersen, started manufacturing insulin in a basement. Since then, the company has accomplished much. In 1947, it was one of the first in the world to produce crystalline penicillin; four years later it launched into the manufacture of heparin, which is used to prevent blood-clotting; and the following year it branched out into the production of enzymes by fermentation.

Novo now markets its products in 120 countries and has extensive research and development facilities in Denmark, Switzerland, France, South Africa, Japan, and the United States. There are subsidiaries or information offices in 25 countries on all continents.

With a worldwide operation, Novo's executives make hefty demands on the company's information systems—for administrative and organizational purposes as well as for the calculation of statistical and analytical operations.

To meet the needs of management, three main computer facilities are available today: a centralized data processing facility based on two ICL 2955 mainframe computers, providing batch and online data processing; a distributed network via Datapoint minicomputers in Copenhagen and in Novo's subsidiaries; and an IBM 3083 system which runs the SHARP APL information services along with other services.

Keeping pace with the company, the development of SHARP APL information services has been rapid at Novo, and coincided with the arrival of the company's data processing manager, Per Klitgaard Andersen, in 1976.

SHARP APL presented a new-found opportunity for self-service data processing. In the early 1970's, before APL was available at Novo, the company's data processing services had been confined to a conventional centralized batch facility. This facility could provide the management information widely sought by the organization's commercial and technical executives.

### ... Novo: A World Force in Bioengineering

The introduction of the I. P. Sharp Online Service for administrative and scientific management was by no means cosmetic. The cost of the new service was rigorously controlled, and by the end of 1978, it had proved itself as an essential and integral facility. All this time, the applications for SHARP APL were multiplying.

#### Installing a SHARP APL/370 system

By the end of 1979, further expansion was necessary to meet user demands. Discussions began regarding the installation of SHARP APL on an in-house computer. In May 1982, an IBM 4341 computer was delivered, and the system was up and running within a week.

So what exactly does Novo need from its SHARP APL system? There are now between 90 and 100 regular APL users—primarily managers of sales and production from the corporate staff. Some of these executives use the facility for complex scientific work, while others have found that it lends itself admirably to production inventory and quality control. A complete personnel registration system also runs on Novo's SHARP APL services.

In addition, Novo's installation of SHARP APL/370 has made APL information and programming facilities available to international users. Andersen takes up the story: "The latest facility we have developed is an economic consolidation tool. We have adapted the Datapoint hardware in our subsidiaries so that it acts like an APL terminal, and this will extend the scope of the system. We also have regular APL terminals in our subsidiaries."

Today, Novo's IBM 3083 is hooked up to the I. P. Sharp Network (IPSANET) via the I. P. Sharp Copenhagen office. The link between the two involves a special communication line made possible by the Danish telecommunications authority, which has been "very cooperative in making all this happen" according to Andersen. The Danish telecommunications authority will also be closely involved in Novo's future plans to make the most of the international PSS network in the United Kingdom.

Meanwhile, the IBM 3083 configuration is continually being enhanced, although the systems development team comprises just six staff. The computer centre operates 24 hours a day, seven days a week. The system is ac-

cessed by terminals that have been systematically developed from standard teletypes and by video terminals, and there are plotters for colour graphics which are additional management tools.

Despite Novo's evident enthusiasm for their SHARP APL system, access is selective and controlled. "We have different sorts of keys exclusive to specific administrative users," Andersen says. "We do not have APL freaks using our system... of our 100 users, only 10 or 20 are doing program development work themselves."

Training is also highly organized. Several internal courses are run with approximately 10 participants at each. Andersen expects that only two from each course will show active interest in using the APL language and systems service in the short term. In the long term, he has seen evidence that the training may be used at a later date. He pointed out that many trainees are busy sales representatives who learn about APL and would return to use it as a management tool, as and when they needed it.

#### Distributed SHARP APL/370 systems

Novo has now joined an exclusive and expanding group of companies that started out using the I. P. Sharp Online Service, and ended up installing their own SHARP APL mainframe configurations.

I. P. Sharp installed its first distributed SHARP APL system in 1978. Now there are 42 installations in the world, and half of these sites have chosen to link with IPSANET. As SHARP APL is updated, Novo and other distributed sites automatically receive the new software releases.

The best information processing systems are as natural an adjunct to a company as an arm or a leg is to the human frame. Unfortunately, the politics of computing still produce information systems that fail to be relevant to their users, for many data processing managers still prefer to believe that centralized computer facilities are the only way to go. Fortunately for Novo Industri, Per Klitgaard Andersen realized that such a narrow vision could only be damaging to the growth and development of the company. Novo evidently enjoys the freedom to exercise self-service computing in the true sense. ■



## Newsday Tracks the News with Online Data

"Newsday prides itself on covering Long Island news and the index gives us another handle on the business news," says Alan Wax, business reporter and assistant editor to the Business Desk.

The index Wax is referring to is the Long Island Stock Index which made its debut in Newsday's Business Section on 27 June 1983. The Long Island Stock Index is a weighted index of publicly traded companies that meet certain generally accepted criteria. I. P. Sharp Associates created the index for Newsday and, for comparison, adjusted the New York Stock Exchange composite index on the same basis, with the base date of 9 January 1981 representing 100.

Newsday, owned by Times Mirror Corporation, has a circulation of over a half million, making it the 11th largest daily newspaper in the United States. It serves the Nassau and Suffolk counties on Long Island—just a 30-minute train ride from New York City.

"I had wanted to do an index on the Long

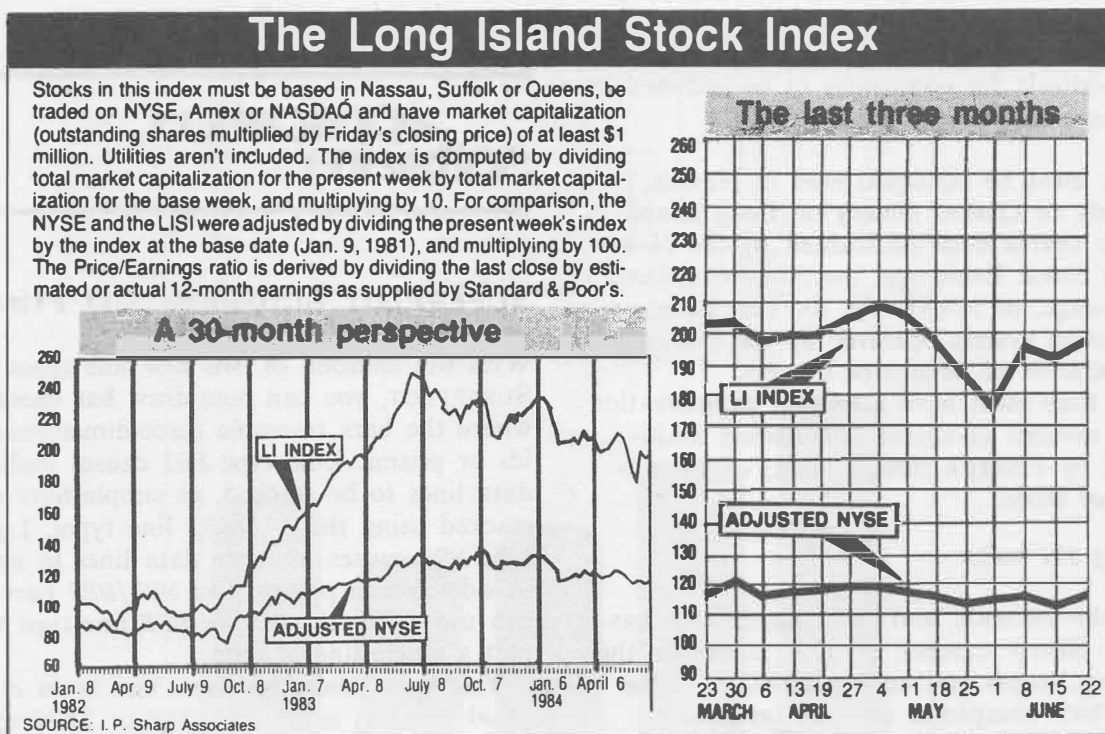
Island economy for over a year", says Wax. "And when Steve Kane and Ginny Marshalek from I. P. Sharp's New York office sold Mary Ann Skinner in our research department on using your data bases, it all seemed possible.

"As a business reporter, I need economic and business-related data quickly," explains Wax. "And although we have press clippings in our library, it wasn't efficient enough. Now I can just call Mary Ann and she supplies the data from the data bases. We can get stock quotes and track them easily. So the online data bases serve two purposes—for research and for the index and the list of the approximately 150 stocks with prices that make up the index."

It took about six months to develop the index. This involved determining the base period, deciding on the number of companies and the criteria for inclusion, and then for I. P. Sharp to write the programs.

### Producing the index

Now the index runs every Monday in the Business Section. I. P. Sharp updates the data bases Friday nights, after the close of the



*The Long Island Stock Index as it appeared in Newsday on 25 June 1984.*

### ...Newsday Tracks the News

markets. Saturday morning, *Newsday* accesses the data for the index and the stock listing via a standard terminal. The data is then downloaded to the *Newsday* computers for layout and photocomposition, and the art department prepares the graphics for the charts.

As a group, Long Island stocks have dramatically outperformed the stock market—in both up and down markets. That, according to analysts, is because of the Island's high concentration of smaller, high-technology firms and because it lacks the energy firms and heavy industry that have suffered so much during the past recession. The *Newsday* Long Island Stock Index is evidence of the strong performance of Long Island companies in the stock market. The index can also serve as somewhat of a guide to the economic outlook for the Island, because, analysts say, stock market indicators generally lead the economy by about four to six months, reflecting investors' expectations of what will take place in the economy.

The Long Island economy is growing, according to the index. Going back to January 1981, 100 companies qualified. In June 1983, the index began with 140 companies meeting the criteria and now there are 150.

The criteria for companies to be included in the index are:

- They must be headquartered in Nassau, Suffolk or Queens county on Long Island.
- Their shares must be tracked by the New York Stock Exchange, the American Stock Exchange, or NASDAQ, the automated quotation system operated by the National Association of Securities Dealers.
- And they must have a market capitalization (the number of shares outstanding multiplied by Friday's closing price) of \$1 million or more.

#### Creating the index

Using the USSTOCK and DISCLOSURE data bases, I. P. Sharp screened all U.S. stocks on the major exchanges and on NASDAQ to determine which companies met the criteria. A weighted average for the group was calculated using the weekly closing price for each of the stocks. January 9, 1981 was chosen arbitrarily

as the base date. The closing on that date represents a base of 100. In weighting the index, I. P. Sharp used a method utilized frequently in such indexes, including Standard & Poor's 500-stock average. The market capitalization of all the companies at the close of each week is totalled and then divided by the capitalization for the base period. The resulting number is then multiplied by 100.

"The index has been well received," says Wax, "and the Long Island business community takes great interest in it. As a matter of fact, one bank that runs a discount brokerage service takes an ad out on the same page as the index week after week. Their ad copy reflects the performance of the stocks that are listed. And the *Long Island Business Review*, a booster publication for business, often cites the index. The index gives a feel for the local economy. Sometime in the future, I'd like to run another index of companies located off island which affect Long Island too."

According to Wax, regional indexes are not a new idea. "The *Miami Herald* does it and so does a paper in North Carolina. I don't know how they do it. But the cost for us has been reasonable. And the index has been prestigious for *Newsday*, since no one else in the region is doing it." ■

---

## application software

---

### SUPERPLOT Introduces 3-D Prisms

With the addition of two new line types in SUPERPLOT, you can now draw **bar charts** where the bars resemble three-dimensional solids or prisms. Line type *PRI* causes multiple data lines to be stacked, as simple bars are stacked using the *SHA/SHI* line types. Line type *MPR* causes multiple data lines to appear in side-by-side prisms, like *MBR/MBS* bars. You can use either the *PRI* or *MPR* line type to plot a single line of data.

You select these two new line types in the usual manner, using the *LINE* or *TYPE* option. In addition, the *LINE* option has been extended so you can select a solid shading colour different from the outline colour.



I.P. Sharp

# newsletter

JULY/AUGUST 1984  
Volume 12 Number 4

## technical supplement 51

### The Rank Operator

In the past, the operator  $\circ$  (on) applied only to two functions to provide composition. As of May 1983, it accepts an integer right argument (as in  $\circ 2$ ) to specify the rank, or ranks, of the subarrays to which the function applies. In this context,  $\circ$  is referred to as the rank operator. For example:

$A \leftarrow 2 \ 3 \ 4 p124$

$\circ 2 \ A$

1 2 3 4 5 6 7 8 9 10 11 12  
13 14 15 16 17 18 19 20 21 22 23 24

$\circ -1 \ A$

1 2 3 4 5 6 7 8 9 10 11 12  
13 14 15 16 17 18 19 20 21 22 23 24

As illustrated above, a non-negative argument specifies the number of **final** axes to which the function applies. A negative argument specifies the **complementary** rank, that is, the number of **leading** axes to be **excluded**. The magnitude of the argument serves only to limit the number of axes; for the  $A$  given above,  $F \circ 4 \ A \leftrightarrow F \circ 3 \ A$ , and  $F \circ -4 \ A \leftrightarrow F \circ -3 \ A$ .

In the dyadic case two ranks (or complementary ranks) are specified. For example:

$E \leftarrow 2 \ 2 p'ABCD'$

$F \leftarrow 2 \ 2 p'1234'$

$E, \circ 1 \ 2 \ F$

A12  
B34

C12  
D34

$E, \circ 0 \ 0 \ F$

A1  
B2

C3  
D4

The most general right argument of  $\circ$  is a three-element vector whose successive elements specify the monadic, left, and right ranks. A shorter argument  $R$  is extended so that  $F \circ R \leftrightarrow F \circ (\phi 3 p \phi R)$ . If the right argument of rank is a scalar, and the resulting derived function is used dyadically, that number will specify the rank of both arguments.

An expression such as  $F \circ R \ A$  introduces the possibility of juxtaposing constants ( $R$  and  $A$ ). If  $R$  is a constant, and if the expression defining  $A$  begins with a constant, then the division between the two constants must be made clear to prevent them from being treated as a single vector. For example, the sequence

$A \leftarrow 2 \ 3 \ 4 p124$

$R \leftarrow 2$

$\circ R \ A$

cannot be written in a single line as

$\circ 2 \ 2 \ 3 \ 4 p124$

but must be written in a form which separates the vector constants. For example:

$\circ (2) \ 2 \ 3 \ 4 p124$

$\circ 2 \ (2 \ 3 \ 4) p124$

$\circ 2 \ A \leftarrow 2 \ 3 \ 4 p124$

$\circ 2 \leftarrow 2 \ 3 \ 4 p124$

## ... The Rank Operator

If a function has rank  $R$ , then the subarrays along the last  $R$  axes of its arguments are the **cells** of the array. The remaining axes are the **frame** of the array. Consider the expression  $\boxed{A}$ , where  $A$  has the shape 8 7 6 5 4.  $\boxed{A}$  has argument rank 2. The cells are arrays of shape 5 4 and the frame has shape 8 7 6.

In contrast, consider the expression  $\lfloor A$ , using the same array  $A$ .  $\lfloor$  has argument rank 0. The cells are scalars, that is, arrays of shape 1 0 and the frame is an array of shape 8 7 6 5 4.

A function applies independently to each cell (or pair of cells, if dyadic) to produce result cells, which must be of common shape. The result is formed by assembling the frame of result cells into an array.

If a function  $F$  has rank  $R$ , then the result of  $F \omega$  is determined by:

- 1) applying  $F$  to each of the **cells** of shape  $(-R) \uparrow \rho \omega$
- 2) producing results with a **common shape**  $SIR$  for each
- 3) assembling the whole into a result of shape  $((-R) \uparrow \rho \omega), SIR$

The frames of the arguments of a dyadic function must match in shape, or one of them must be a scalar. If the frame is a scalar, it is extended by reshaping it to match the shape of the other frame. This is a generalization of scalar extension.

By convention, if the frame is empty (that is,  $0 \in (-R) \uparrow \rho \omega$ ), then the empty vector is used as the result cell shape.

## Examples

Common uses for the rank operator include:

- 1) applying functions of infinite rank (such as **enclose** and **ravel**) to subarrays within multidimensional arrays
- 2) applying scalar functions (such as addition) in ways that would not otherwise be possible under the rules of ordinary scalar extension

The following examples illustrate uses of the rank operator.

```
V←15 ⋄ X←10×14 ⋄ Y←100×13
M←3 4⍴12 ⋄ N←?M ⋄ B←3 4 5⍴60
Q←2 5⍴'ABCDEDCBA'
⍳PS←-1 1 3 3
```

## Examples with enclose

$<\ddot{0} M$       Enclose each (scalar) element

1	2	3	4
---	---	---	---

5	6	7	8
---	---	---	---

9	10	11	12
---	----	----	----

$<\ddot{1} M$       Enclose rows

1 2 3 4	5 6 7 8	9 10 11 12
---------	---------	------------

$<\ddot{2} B$       Enclose matrices

1 2 3 4 5	21 22 23 24 25	41 42 43 44 45
6 7 8 9 10	26 27 28 29 30	46 47 48 49 50
11 12 13 14 15	31 32 33 34 35	51 52 53 54 55
16 17 18 19 20	36 37 38 39 40	56 57 58 59 60

## Examples with grade

$N$

1 2 3 4
2 4 6 1
1 6 8 1

$\uparrow \ddot{1} N$       Upgrade each row independently

1 2 3 4
4 1 2 3
1 4 2 3

$\uparrow \ddot{1} N$       Independent upgrade of each column

1 1 1 2
3 2 2 3
2 3 3 1



## ... The Rank Operator

$Q \uparrow 1$  'ABCDEF' Upgrade with multiple  
collating sequences

```
1 2 3 4 5 6
5 4 3 2 1 6
```

## Example with ravel

$\uparrow 2 B$  Ravel each matrix

```
1 2 3 4 5 6 7 8 9 10 11 12 13 14 15 16 17 18 19 20
21 22 23 24 25 26 27 28 29 30 31 32 33 34 35 36 37 38 39 40
41 42 43 44 45 46 47 48 49 50 51 52 53 54 55 56 57 58 59 60
```

## Example with iota

$M \uparrow 1 N$  Independent search on  
rows, as in  
 $M[1;] \uparrow N[1;]$ , etc.

```
1 2 3 4
5 5 2 5
5 5 5 5
```

## Examples with addition

$X \uparrow 1 M$  Add scalars to rows,  
as in  $M + (\rho M) \rho X$

```
11 22 33 44
15 26 37 48
19 30 41 52
```

$\Phi Y \uparrow 1 \Phi M$  Add scalars to columns,  
as in  $M + \Phi(\Phi \rho M) \rho Y$

```
101 102 103 104
205 206 207 208
309 310 311 312
```

$Y \uparrow 0 2 B$  Add scalars to matrices

```
101 102 103 104 105
106 107 108 109 110
111 112 113 114 115
116 117 118 119 120

221 222 223 224 225
226 227 228 229 230
231 232 233 234 235
236 237 238 239 240

341 342 343 344 345
346 347 348 349 350
351 352 353 354 355
356 357 358 359 360
```

## Acknowledgements

This article has been excerpted from SATN 45, "Language Extensions of May 1983", 2 May 1983. ■

## Contest 13

Many an APL programmer is faced with the task of efficiently reexpressing the solution to a problem which can be stated quite easily in an inefficient manner. Such problems make ideal APL contests because they have the pleasant side effect of adding to our repertoire of useful APL phrases.

APL programmers must also be able to recognize when the solution to an abstract problem is applicable to their practical one at hand. I hope that many will find the solution to this contest applicable to problems in diverse fields.

Consider a production schedule consisting of two vectors. The first is work to be done, measured in some unit, say hours. The second is the capacity to perform that work, measured in the same units. If work is not performed, it is carried forward. Excess capacity however, cannot be carried forward.

In this problem, we wish to compute *WORKDONE*, subject to the recurrence relationship:

$WORKDONE[I] \leftrightarrow CAPACITY[I][+/I+WORK] - +/(I-1)+WORKDONE$   
(In origin 1)

So the challenge is to write a dyadic function *TODO* having the form:

$\nabla WORKDONE \leftarrow CAPACITY \ TODO \ WORK \nabla$

The following are sample inputs and outputs to the function *TODO*:

```
3 1 5 TODO 1 2 3
1 1 4
1 2 3 TODO 3 1 5
1 2 3
```

## ...Contest 13

Entries will be judged in terms of functionality, elegance, cost, and any other factors required to identify a unique winner.  $\square$ APPEND entries as enclosed arrays to file 999 CONTEST, on the I. P. Sharp Online Service, no later than **15 September 1984**. The first element of the enclosed array should contain your name, address, and organization affiliation (and I. P. Sharp MAILBOX code), and the second component the  $\square$ CR of the function, for example:

```
'999 CONTEST'  $\square$ STIE 1  
( 'DOUG FORKES, IPSA, SUITE 1900, ETC., DLF'- $\square$ CR'TODO' ) $\square$ APPEND 1
```

You may also mail your solution to:

Doug Forkes  
I. P. Sharp Associates Limited  
Suite 1900  
2 First Canadian Place  
Toronto, Ontario  
Canada M5X 1E3

I. P. Sharp MAILBOX code: DLF

The basic SHARP APL/PC package will be awarded to the person who is not an employee of I. P. Sharp submitting the best entry. The employee who submits the best entry will receive a book of his or her choice.

The workspace 999 CONTEST on the I. P. Sharp Online Service will store the terms of this contest and the winning solutions. Good luck, and the results will be announced in a future issue. ■

*Doug Forkes, Toronto*

## Correction

In the article "Working with Character Matrices", *Technical Supplement 50*, May/June 1984, the function shown in figure 1 on page T5 is incorrect. The last line should read:

```
[7] R $\leftarrow$ ( $\wedge$ /X=Y[R;]) $\wedge$ R $\neq$  $\square$ IO+(1 $\uparrow$ pY)-1
```

### ...SUPERPLOT Introduces 3-D Prisms

Using a new option called *PRISM*, you can control the number of sides of the prism (the default is a rectangular prism with four sides). Specifying six sides gives you hexagonal prisms similar to those available in the public workspace 760 *HEXPLOT*. The prisms may be plotted *face front* or *edge front*; that is, with a face of the prism facing the viewer, or with an edge facing the viewer. Face front implies that an edge of the prism lies along the *x* axis; edge front implies that just a corner of the prism touches the *x* axis. Edge front is the default for three-sided prisms; face front is the default for any other number of sides.

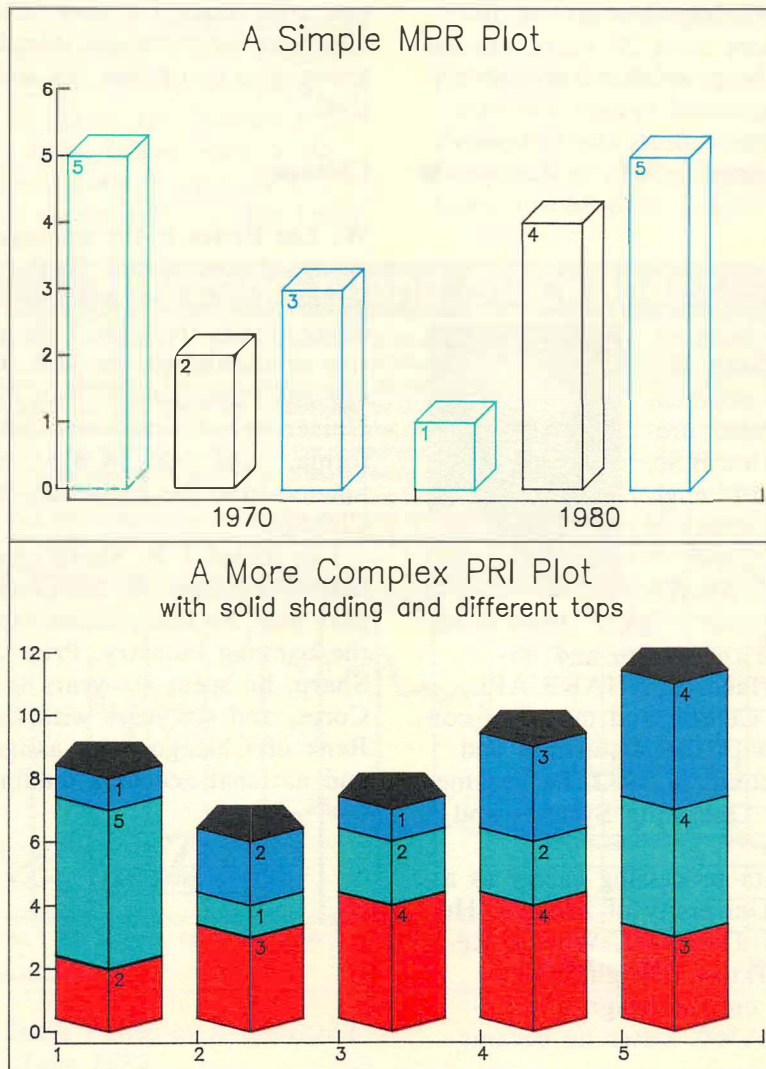
Also, the top of the prism (or stack of prisms) may be the same as, or different from, the sides of the top segment in the stack. If

it's the same, it will have the same outline colour and style, and the same solid shading as the top segment. For example, the top might be drawn in outline only, though the sides are solidly shaded; or the top might be solidly shaded in black, while the sides are coloured. These features are all controlled by the *PRISM* option.

More details on *PRI* and *MPR* line types are available in *SUPERPLOT NEWS*, items 51 and 58; extension of the *LINE* option to specify solid shading is detailed in item 53. To access *SUPERPLOT NEWS*:

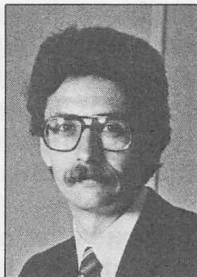
```
)LOAD 3 SUPERPLOT
DSUPERPLOT 'NEWS,51 58;'
```

Linda Furrow, Calgary



## London

**Eric Iverson** has been appointed managing director of Europe, based in the London, England, office. He joined I. P. Sharp Associates in 1968 as a system programmer. In 1972, he was the project manager for the development of the Siemens APL system in Heidelberg.

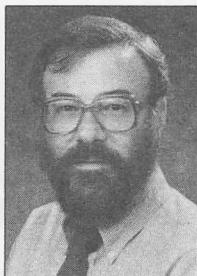


On his return to Toronto in the summer of 1973, Eric became manager of the APL Development Group. In 1976, in addition to his previous responsibilities, he took on the position of data processing manager at I. P. Sharp's international headquarters.

Eric has been significantly involved in five different SHARP APL implementations and has used APL for more than 20 years. He has also been active in the promotion and delivery of SHARP APL distributed system software. His recent appointment reflects the company's commitment to continued growth in Europe. ■

## Toronto

**Richard Lathwell** has been appointed manager of the Research and Development Group. He is a licensed professional engineer with a B.Sc. degree in mechanical engineering from the University of Alberta.



Dick joined I. P. Sharp's APL Development Group in 1977. He was involved primarily with the design and implementation of interfaces to SHARP APL, support of the Data Centre, and customer consultation concerned with the acquisition and application of computers. In 1982, he became product manager for Operating Systems and Auxiliary Processors.

Dick began his data processing career as a programmer at the University of Alberta. He then joined the IBM Thomas J. Watson Research Center in Yorktown Heights, New York, to collaborate on the design and implementation of APL\360. Later he became

manager of APL Implementation and System Design at the IBM Philadelphia Scientific Center, where he developed APLSV. Finally, in the IBM APL Design Group, he worked on the development of APL for the IBM 5100 Personal Computer. ■

## International Banking Support Group

The International Banking Support Group coordinates I. P. Sharp's marketing and support to international banks world wide. The members of this team all have strong backgrounds in finance and economics, and a clear understanding of the needs of the banking community. They have been responsible for the development of the Global Limits Control System and customized systems in areas such as Portfolio Analysis, Budgeting, Country Risk Analysis, and Asset/Liability Management. In addition to the members introduced here, the group also comprises the technical support staff.

### Chicago

**W. Lee Bettles** is the manager of the International Banking Support Group. He has a B.A. in economics from the University of Oklahoma, an M.S. in systems management from the University of Southern California, and an M.B.A. in finance from the University of Chicago.



Lee joined I. P. Sharp three years ago as branch manager of the Chicago office. This past year he has concentrated his efforts in the banking industry. Prior to joining I. P. Sharp, he spent six years in the U.S. Marine Corps, and six years with the First National Bank of Chicago, with assignments in systems and national accounts lending.

**London**

**Bob Hayim** is the European banking products manager. He completed his Bachelor's degree in economics and a Master's in Business Administration, specializing in corporate strategy.

Before joining I. P. Sharp, he worked in management consulting for one year, and two years in a contract management group. Since coming to I. P. Sharp, Bob has been involved exclusively with the packaging and marketing of banking products within Europe.



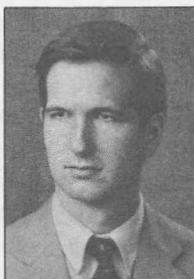
**Mark Rudland** joined I. P. Sharp this year as the London sales and support consultant for the banking group. Before joining I. P. Sharp, he worked, for three and a half years, in the London office of the Bank of America in their European, Middle East and Africa division treasury office.

Mark graduated from Kingston Polytechnic with a B.A. in business studies.

**New York**

**Richard C. Storey** joined I. P. Sharp this year as the banking products manager for the U.S. Dick earned his Bachelor's degree in history from Boston University, and studied advanced Chinese language at Taiwan Normal University.

He spent three years overseas working in Taiwan. He then joined Manufacturers Hanover Trust in their management training program. He worked in their international department, Far Eastern Section, for three years. His assignments involved working with Hong Kong, People's Republic of China, Korea and Taiwan. ■

**New Local Access Number****Aberdeen**

120 cps 591244

---

**publications**

---

**Special Offer from APL PRESS**

APL PRESS now offers I. P. Sharp customers the Computer Innovations Optimizing C86 C Compiler for the IBM PC and PC XT microcomputers. After investigating several possibilities, the I. P. Sharp PC Development Group adopted this compiler as its standard. Customers who would like to do their own enhancements in C can now order this compiler for US\$312, plus postage and handling. To place your orders contact:

**APL PRESS**

Suite 201, 220 California Avenue  
Palo Alto, California  
U.S.A. 94306-1683

Telephone: 415 327-1700

I. P. Sharp MAILBOX code: *PRESS* ■



## Bookends

### **CITIBASE and CITIFORECAST Data Bases** *(revised)*

Citicorp Information Services provides U.S. economic statistics from more than 100 government and private sources for the CITIBASE data base. The data base includes: National Income and Product Accounts, data from the *Business Conditions Digest* and Federal Reserve Board publications, producers' and consumers' price indices, wholesale and retail sales, construction and housing starts, unemployment and employment, and the workweek and average earnings. CITIFORECAST contains 250 quarterly macroeconomic time series that predict statistics for the major segments of the U.S. economy.

This manual is completely revised. The most recent versions of the CITIBASE and CITIBASE WEEKLY directories come with the manual as a separate supplement.

*Manual: July 1984, 36 pp., \$4.00*

*Directories: June 1984, 200 pp., \$12.00*

### **COMMODITIES Data Base** *(revised)*

The COMMODITIES data base comprises daily prices, volumes, and open interest for all major commodities traded on the London, New York, Chicago, Kansas City, Minneapolis, Winnipeg, and Toronto/Montreal futures markets. It includes both metals and soft commodities, with time series data available for: opening and closing prices, high and low prices, volume (number of contracts traded), and open interest (number of contracts outstanding). The information is given in the form of life-of-contract series and continuation series.

*April 1984, 62 pp., \$6.00*

### **Aviation Data Bases Reference Guide** *(revised)*

The *Aviation Data Bases Reference Guide* contains all the information you need to access any of the 10 aviation data bases available from I. P. Sharp Associates. The data bases are arranged by category—Financial, Operating and Traffic Statistics; Flight Schedules; and Origin and Destination Traffic Statistics.

Within the categories, they are grouped according to similar data content.

Each data base is described complete with a list of facts available, sample series codes, symbols and numbers for each data base, and directions for producing a complete list of series and fact codes. The guide also explains how to access the data and shows a sample access for each workspace.

*June 1984, 63 pp., \$5.00*

### **Economic Data Bases Reference Guide** *(revised)*

This reference guide is designed to help you access all 32 economic data bases available through I. P. Sharp. If you are already familiar with one or more of the data bases, you can quickly obtain data from these and incorporate it with that from other, perhaps less familiar, data bases.

The contents of each data base are described, and instructions on how to access the data are given. You can access all of the economic data bases via one or more of three software systems—INFOMAGIC, a straightforward, user-friendly means of accessing a variety of reports; MAGIC, a slightly more sophisticated method of retrieval aimed at a non-technical user; and RETRIEVE, for APL users who want to integrate information into their own tailored systems.

*June 1984, 80 pp., \$6.00*

### **Energy Data Bases Reference Guide** *(revised)*

This comprehensive guide serves as a complete reference for 84 energy data bases available online from I. P. Sharp Associates. All the information you need is presented here in a concise format—so you can produce the report, table or graph you require in a matter of minutes.

The guide contains an introduction to the various methods of accessing the data and a subject guide to identify the data bases covering the area of interest. Each data base entry contains a description of the data base, a list of sample codes for each fact, directions for printing a complete and up-to-date list, instructions to access the data, and other pertinent information.

*May 1984, 185 pp., \$10.00*

## ... Bookends

### Microcomputer Products

#### MICROCOMM (revised)

MICROCOMM is a microcomputer product which IBM Personal Computer users can use to communicate with the I. P. Sharp Network. Using MICROCOMM, you can quickly and conveniently sign on to the I. P. Sharp Online Service to access information in the I. P. Sharp public data bases, and transfer data between the I. P. Sharp system and IBM PC files. Included in the package is the *MICROCOMM Users' Guide* and diskette.

MICROCOMM Version 2.1 features support for )*TERMINAL NULLS*, and friendlier handling of Hayes Smartmodems and Smartmodem cards. In addition, you now return directly to DOS after a MICROCOMM session. File extension .DIF is no longer applied by MICROCOMM.

April 1984, 32 pp. + diskette, CDN\$60.00

#### PLOTCOMM (new)

IBM Personal Computer users can now produce graphics on a colour graphics monitor attached to a PC, with PLOTCOMM. PLOTCOMM gives you the power of SUPERPLOT combined with MICROCOMM. With PLOTCOMM, you sign on to the I. P. Sharp Online Service using the IBM PC as an intelligent terminal on the I. P. Sharp Network. Then you can load any workspace containing SUPERPLOT to produce plots using data from I. P. Sharp public data bases or from your own private data bases. (See the article in the May/June 1984 issue of the *I. P. Sharp Newsletter*.) This microcomputer product comes complete with a users' guide and diskette.

May 1984, 35 pp. + diskette, CDN\$100.00

### mailing request

- ☐ Please amend my mailing address as indicated.
- ☐ Please add the following name(s) to your Newsletter mailing list.
- ☐ Please send me a Publications Order Form.
- ☐ Please add my name to the Aviation Newsletter mailing list.
- ☐ Please add my name to the Energy Newsletter mailing list.
- ☐ Please add my name to the Financial and Economic Newsletter mailing list.
- ☐ Please add my name to the PROMIS Newsletter mailing list. PROMIS is a computer-aided manufacturing system for microelectronics.

Name: \_\_\_\_\_

Title: \_\_\_\_\_

Company: \_\_\_\_\_

Address: \_\_\_\_\_  
\_\_\_\_\_  
\_\_\_\_\_

☐ Please send me information about your courses in:

City: \_\_\_\_\_ Tel.: \_\_\_\_\_

The *I. P. Sharp Newsletter* is published by I. P. Sharp Associates, Suite 1900, 2 First Canadian Place, Toronto, Canada M5X 1E3.  
Your comments and contributions are welcome.

Editor: Irene Shimoda  
Design and Layout: Susan Storey,  
Carol Rutherford  
Circulation: Mary Kopfensteiner

Printed in Canada  
August 1984  
ISSN 0226 854X  
Publication Code:  
0073 8408 E68

**Amsterdam**  
InterSystems BV  
Kabelweg 47  
1014 BA Amsterdam  
The Netherlands  
(020) 86 80 11  
Telex: 18795 ITS NL

**Boston**  
I.P. Sharp Associates, Inc.  
1 Liberty Square  
Boston, Massachusetts 02109  
(617) 542-2313

**Brisbane**  
I.P. Sharp Associates Pty. Ltd.  
6th Floor, Dalgety House  
79 Eagle Street  
Brisbane, Queensland 4000  
Australia  
(07) 229-8330

**Brussels**  
I.P. Sharp Europe SA  
Boulevard de la Cambre 36, bte 5  
1050 Bruxelles, Belgium  
(02) 649 99 77

**Calgary**  
I.P. Sharp Associates Limited  
Suite 550, Bow Valley Square 4  
250-6th Avenue S.W.  
Calgary, Alberta T2P 3H7  
(403) 265-7730

**Canberra**  
I.P. Sharp Associates Pty. Ltd.  
National Press Club Building  
16 National Circuit  
Barton, A.C.T. 2600  
Australia  
(062) 73-3700

**Chicago**  
I.P. Sharp Associates, Inc.  
Suite 3860  
55 West Monroe Street  
Chicago, Illinois 60603  
(312) 782-3177

**Copenhagen**  
I.P. Sharp ApS  
Østergade 24B  
1100 Copenhagen K  
Denmark  
(01) 11 24 34

**Coventry**  
I.P. Sharp Associates Limited  
7th Floor B Block  
Coventry Point, Market Way  
Coventry CV1 1EA, England  
(0203) 56562

**Dallas**  
I.P. Sharp Associates, Inc.  
Suite 1148, Campbell Center  
8350 North Central Expressway  
Dallas, Texas 75206  
(214) 369-1131

**Denver**  
I.P. Sharp Associates, Inc.  
Suite 416  
5680 South Syracuse Circle  
Englewood, Colorado 80111  
(303) 741-4404

**Dublin**  
I.P. Sharp Associates Limited  
Segrave House  
Earlsfort Terrace  
Dublin 2, Ireland  
(01) 763605

**Düsseldorf**  
I.P. Sharp GmbH  
Kaiserswertherstrasse 115  
4000 Düsseldorf 30  
West Germany  
(0211) 45 20 52

**Edmonton**  
I.P. Sharp Associates Limited  
2358 Principal Plaza  
10303 Jasper Avenue  
Edmonton, Alberta T5J 3N6  
(403) 428-6744

**Frankfurt**  
I.P. Sharp GmbH  
Rossertstrasse 15  
am Palmengarten  
6000 Frankfurt  
West Germany  
(069) 72 47 73

**Halifax**  
I.P. Sharp Associates Limited  
Suite 706, Cogswell Tower  
2000 Barrington Street  
Halifax, Nova Scotia  
B3J 3K1  
(902) 423-6251

**Helsinki**  
TMT-Team Oy (Agent)  
Westendintie 1  
SF-02160  
Espoo 16, Finland  
(0) 4521155

**Hong Kong**  
I.P. Sharp Associates (HK) Limited  
Suite 606, Tower 1  
Admiralty Centre, Hong Kong  
5-294341

**Houston**  
I.P. Sharp Associates, Inc.  
Suite 375, One Corporate Square  
2600 Southwest Freeway  
Houston, Texas 77098  
(713) 526-5275

**London, Canada**  
I.P. Sharp Associates Limited  
Suite 510, 220 Dundas Street  
London, Ontario N6A 1H3  
(519) 673-4060

**London, England (European Headquarters)**  
I.P. Sharp Associates Limited  
132 Buckingham Palace Road  
London SW1W 9SA, England  
(01) 730-4567  
Telex: 8954178 SHARP G

**Los Angeles**  
I.P. Sharp Associates, Inc.  
Suite 1230  
1801 Century Park East  
Los Angeles, California  
90067  
(213) 277-3878

**Madrid**  
I.P. Sharp Associates Limited  
Serrano 23, Piso 8  
28001 Madrid, Spain  
(91) 276 70 54

**Melbourne**  
I.P. Sharp Associates Pty. Ltd.  
7th Floor, 520 Collins St.  
Melbourne, Victoria  
3000, Australia  
(03) 614-1766

**Mexico City**  
Teleinformatica de Mexico SA  
(Agent)  
Arenal N 40, Chimalistac  
Mexico 20 D.F., Mexico  
(905) 550-8033

**Miami**  
I.P. Sharp Associates, Inc.  
Suite 240  
15327 N.W. 60th Avenue  
Miami Lakes, Florida 33014  
(305) 556-0577

**Milan**  
Informatica Societa Italia Srl  
(Agent)  
Via Eustachi 11  
20129 Milan, Italy  
(02) 221 612

**Montreal**  
I.P. Sharp Associates Limited  
Suite 1610  
555 Dorchester Boulevard W.  
Montreal, Quebec H2Z 1B1  
(514) 866-4981

**New York**  
I.P. Sharp Associates, Inc.  
Suite 210  
230 Park Avenue  
New York, New York 10169  
(212) 557-7900

**Newport Beach**  
I.P. Sharp Associates, Inc.  
Suite 1135  
610 Newport Center Drive  
Newport Beach, California  
92660  
(714) 644-5112

**Oslo**  
I.P. Sharp A/S  
Postboks 486 Sentrum  
Dronningens gate 34  
Oslo 1, Norway  
(02) 41 17 04

**Ottawa**  
I.P. Sharp Associates Limited  
Suite 600, 265 Carling Ave.  
Ottawa, Ontario K1S 2E1  
(613) 236-9942  
Telex: 0533604 1 P SHARP OTT

**Palo Alto**  
I.P. Sharp Associates, Inc.  
Suite 201, 220 California Ave.  
Palo Alto, California  
94306-1683  
(415) 327-1700

**Paris**  
I.P. Sharp SARL  
9 Rue du Cirque  
75008 Paris, France  
(1) 225 98 20

**Rochester (United States Headquarters)**  
I.P. Sharp Associates, Inc.  
1200 First Federal Plaza  
Rochester, New York 14614  
(716) 546-7270

**Rome**  
Informatica Societa Italia Srl  
(Agent)  
Piazza Della Rotonda 2  
00100 Rome, Italy  
(06) 656 5925

**San Francisco**  
I.P. Sharp Associates, Inc.  
Suite C-415, 900 North Point St.  
San Francisco, California  
94109  
(415) 673-4930

**Saskatoon**  
I.P. Sharp Associates Limited  
Suite 303, Financial Bldg.  
230-22nd St. East  
Saskatoon, Saskatchewan  
S7K 0E9  
(306) 664-4480

**Seattle**  
I.P. Sharp Associates, Inc.  
Suite 1009, United Airlines Bldg.  
2033 6th Avenue  
Seattle, Washington 98121  
(206) 467-5990

**Seoul**  
Daewoo Corporation (Agent)  
541, 5-Ga, Namdaemoon-Ro  
Jung-Gu, CPO Box 2810  
8269 Seoul, Korea  
771-91/2  
Telex: 23341-5/24295 DAEWOO K

**Singapore (Far East H.Q.)**  
I.P. Sharp Associates (S) Pte. Ltd.  
77 Robinson Road, No. 14-00  
SIA Building  
Singapore 0106  
Republic of Singapore  
2230211  
Telex: 20597 IPSAS RS

**Singapore**  
Singapore International  
Software Services Pte. Ltd.  
(Agent)  
77 Robinson Road, No. 14-00  
SIA Building  
Singapore 0106  
Republic of Singapore  
2230211

**Stockholm**  
I.P. Sharp AB  
Kungsgatan 65  
S111 22 Stockholm, Sweden  
(08) 24 43 90

**Sydney (Australian H.Q.)**  
I.P. Sharp Associates Pty. Ltd.  
8th Floor, Carlton Centre  
55 Elizabeth St.  
Sydney, New South Wales 2000  
Australia  
(02) 232-6366

**Tokyo**  
INTEC, Inc. (Agent)  
Dai 23 Mori Bldg. 4th Floor  
1-23-7 Toranomon  
Minato-ku, Tokyo 105  
Japan  
(03) 502-8781  
Telex: 2322008 INTECA J

**Toronto (International Headquarters)**  
I.P. Sharp Associates Limited  
Suite 1900  
2 First Canadian Place  
Toronto, Ontario  
Canada M5X 1E3  
(416) 364-5361  
Telex: 0622259 I P SHARP TOR

**Vancouver**  
I.P. Sharp Associates Limited  
Suite 902, 700 West Pender St.  
Vancouver, British Columbia  
V6C 1G8  
(604) 687-8991

**Victoria**  
I.P. Sharp Associates Limited  
Chancery Court  
1218 Langley Street  
Victoria, British Columbia  
V8W 1W2  
(604) 388-6365

**Vienna**  
I.P. Sharp Ges.m.bH  
Renngasse 4  
A-1010 Wien, Austria  
(0222) 66 42 48

**Washington**  
I.P. Sharp Associates, Inc.  
Suite 305, 2033 K Street N.W.  
Washington, D.C. 20006  
(202) 293-2915

**Wayne**  
I.P. Sharp Associates, Inc.  
Suite 303  
155 Willowbrook Blvd.  
Wayne, New Jersey 07470  
(201) 785-8050

**White Plains**  
I.P. Sharp Associates, Inc.  
Suite 312 West  
701 Westchester Avenue  
White Plains, New York 10604  
(914) 328-8520

**Winnipeg**  
I.P. Sharp Associates Limited  
Suite 208  
213 Notre Dame Avenue  
Winnipeg, Manitoba R3B 1N3  
(204) 947-1241

**Zurich**  
I.P. Sharp AG  
Fortunagasse 15  
CH-8001 Zurich, Switzerland  
(01) 211 84 24

## I.P. Sharp Network

**SHARP APL HELP LINE 416 363-2051 I.P. SHARP NETWORK HELP LINE 416 363-1832  
CALLS ARE ANSWERED 24-HOURS-A-DAY**

I.P. Sharp's private, packet-switched network connects with the value added networks-Datapac, Datex-P, PSS, Telenet, Telepac, Transpac, and Tymnet-to provide access from the 46 countries listed below:

**Argentina • Australia • Austria • Bahamas • Bahrain • Barbados • Belgium • Bermuda • Brazil • Canada • Chile • Denmark • Dominican Republic • Finland • France • French Antilles • Germany • Great Britain • Hong Kong • Hungary • Ireland • Israel • Italy • Japan • Korea • Kuwait • Luxembourg • Mexico • The Netherlands • New Zealand • Norway • The Philippines • Portugal • Puerto Rico • Qatar • Republic of Singapore • Republic of South Africa • Saudi Arabia • Scotland • Spain • Sweden • Switzerland • Taiwan • United Arab Emirates • U.S.A. • Virgin Islands**

The I.P. SHARP timesharing service is accessible from over 600 places via a local telephone call. Please ask your nearest I.P. Sharp office or representative for a complete list of access points and access procedures. The I.P. Sharp Network also connects with the worldwide Telex network via the Amsterdam and Rochester, New York nodes.